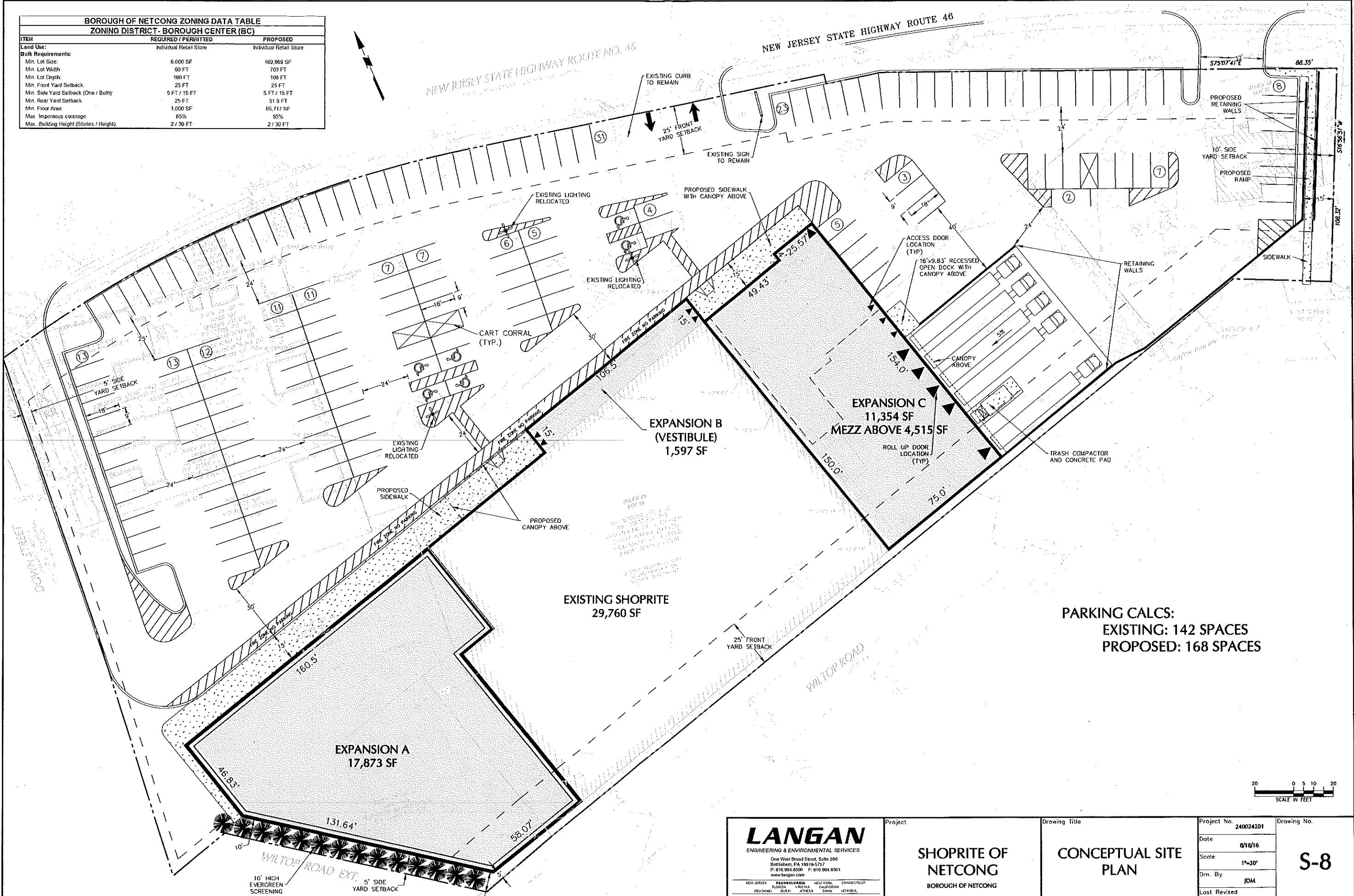


**BOROUGH OF NETCONG ZONING DATA TABLE**  
**ZONING DISTRICT- BOROUGH CENTER (BC)**

ITEM	REQUIRED / PERMITTED	PROPOSED
Land Use:	Individual Retail Store	Individual Retail Store
Bulk Requirements:		
Min. Lot Size:	6,000 SF	169,969 SF
Min. Lot Width:	60 FT	703 FT
Min. Lot Depth:	100 FT	108 FT
Min. Front Yard Setback:	25 FT	25 FT
Min. Side Yard Setback (One / Both):	5 FT / 15 FT	5 FT / 15 FT
Min. Rear Yard Setback:	25 FT	25 FT
Min. Floor Area:	1,000 SF	65,717 SF
Max. Impervious Coverage:	65%	95%
Max. Building Height (Stories / Height):	2 / 30 FT	2 / 30 FT



**PARKING CALCS:**  
 EXISTING: 142 SPACES  
 PROPOSED: 168 SPACES



**LANGAN**  
 ENGINEERING & ENVIRONMENTAL SERVICES  
 One West Broad Street, Suite 200  
 Bethlehem, PA 18018-5717  
 P: 610.994.8500 F: 610.994.8501  
 www.langan.com

Project: **SHOPRITE OF NETCONG**  
 BOROUGH OF NETCONG  
 MORRIS COUNTY

Drawing Title: **CONCEPTUAL SITE PLAN**

Project No. 240024201  
 Date: 8/18/16  
 Scale: 1"=20'  
 Drn. By: JDM  
 Last Revised:

**S-8**